

Department of Medicine Clinical & Education Retreat

Social Capital in Healthcare

Friday, October 4 | 8 a.m. - 1 p.m.

Chevy Chase Auditorium

Featuring

Keynote Speaker

Thomas H. Lee, MD

Chief Medical Officer at Press Ganey
Senior Physician at Brigham & Women's Hospital
Faculty Member at Harvard Medical School

**Co-sponsored by the Armstrong Institute for
Patient Safety and Quality*

Clinical & Education Workshop

Teaching Competition

Clinical Problem Solving

#HopkinsClinEdRetreat
@JohnsHopkinsDOM



Welcome to the 2024 Department of Medicine
CLINICAL & EDUCATION RETREAT

- 8:00 a.m.** Director's Welcome / Opening Remarks
Nadia N. Hansel, MD, MPH
Director, Department of Medicine
- 8:15 a.m.** Medical Grand Rounds & Keynote Address
Thomas H. Lee, MD
Chief Medical Officer at Press Ganey
Senior Physician at Brigham & Women's Hospital
Faculty Member at Harvard Medical School
- 9:00 a.m.** Break
- 9:10 a.m.** Panel Discussion: ***Trust in Healthcare***
Participants: Natasha Chida, MD, MSPH; Erica Johnson, MD & Corey Tapper, MD, MS
Moderator: Amteshwar Singh, MD, MEd
- 10:25 a.m.** Break
- 10:35 a.m.** Teaching Competition
- 11:50 a.m.** Break (Lunch will be provided for those registered)
- 12:00 p.m.** Case Problem Solving and Lunch
- 1:00 p.m.** Retreat Close

KEYNOTE SPEAKER



Thomas H. Lee, MD

Chief Medical Officer at Press Ganey
Senior Physician at Brigham & Women's Hospital
Faculty Member at Harvard Medical School

Dr. Thomas Lee is the Chief Medical Officer at Press Ganey, a senior physician at Brigham and Women's Hospital, a faculty member at Harvard Medical School and Harvard T.H. Chan School of Public Health, and Editor-in-Chief of NEJM Catalyst. He trained in internal medicine and cardiology at Brigham and Women's Hospital and was in senior management of Mass General Brigham (then Partners Healthcare) from 1995-2013. As Chief Medical Officer, Dr. Lee is responsible for developing clinical and operational strategies to help providers measure and improve the patient experience, with the overarching goals of reducing patient suffering and improving the value of care. He has more than three decades of experience in healthcare performance improvement as a practicing physician, a leader in provider organizations, a researcher, and a health policy expert. An internist and cardiologist, Dr. Lee continues to practice primary care at Brigham and Women's Hospital in Boston. He is also the author of 9 books, including the forthcoming *Social Capital in Healthcare*.

PANEL DISCUSSION

Trust in Healthcare

Natasha M. Chida, MD, MSPH

Associate Professor of Medicine, Division of Infectious Diseases
Program Director, Osler Medical Residency
Myron L. Weisfeldt Professor of Medicine



Dr. Chida is the Director of the Osler Medical Residency. She is the Myron L. Weisfeldt Professor of Medicine and is an assistant professor in the Division of Infectious Diseases. Prior to becoming Program Director of the Osler Residency in 2021, Dr. Chida served as the associate director of the Infectious Diseases Fellowship Training Program for 6 years. She was also co-director of the Medical Education Pathway of the Johns Hopkins Bayview Internal Medicine Residency Program and the Osler Medical Residency. Dr. Chida has served on national education committees for the ACGME and the Infectious Disease Society of America, and is a Fellow of the Infectious Disease Society of America.

Dr. Chida received undergraduate degrees in English and Psychology from the University of Florida. She then earned her medical degree and masters of science in public health from the University of Miami Miller School of Medicine. She completed her residency in internal medicine at the University of Miami/Jackson Memorial Hospital, where she also served as a chief medical resident. She came to Hopkins to pursue fellowship in infectious diseases, and in 2016, she joined the faculty in the Division of Infectious Diseases.

Dr. Chida's interests include career development for physicians-in-training, the advancement of women in medicine, and how to best train residents and fellows in HIV care. Clinically she focuses on HIV care and general infectious diseases.

Erica N. Johnson, MD

Senior Vice President for Academic and Medical Affairs
American Board of Internal Medicine



Dr. Johnson earned an undergraduate degree at the University of Virginia, followed by a medical degree at the University of Maryland. She completed a residency in internal medicine at Walter Reed Army Medical Center in Washington, D.C., and a fellowship in infectious diseases at Brooke Army Medical Center (BAMC) in San Antonio, Texas.

Dr. Johnson serves as a fellow of the American College of Physicians, and completed 11 years as a medical corps officer in the United States Army, where she served as associate program director for the San Antonio Uniformed Services Health Education Consortium (SAUSHEC) Internal Medicine Residency and Infectious Disease Fellowship Programs at BAMC. She also held an appointment as assistant professor of medicine at the Uniformed Services University of the Health Sciences.

Dr. Johnson has research interests in infections associated with combat trauma and deployment infection control, as well as HIV outcomes, gender-based health issues, and disparities in care.

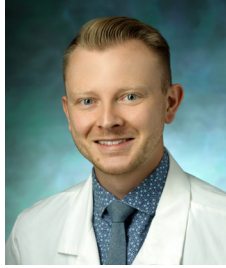
PANEL DISCUSSION CONTINUED: TRUST IN HEALTHCARE

Corey X. Tapper, MD, MS

Assistant Professor of Medicine, Division of General Internal Medicine, Section of Palliative Medicine

Associate Program Director for Wellness, Osler Medical Residency

Associate Program Director, Hospice and Palliative Medicine Fellowship



Dr. Tapper is an Assistant Professor of Medicine at the Johns Hopkins University School of Medicine. His areas of expertise include Palliative Medicine, Internal Medicine, and medical education. Dr. Tapper is the Associate Program Director for the Hospice and Palliative Medicine fellowship program. He also serves as Associate Program Director for Wellness for the Osler Medical Residency and as faculty for the Longcope Firm. Dr. Tapper is a leader within the American Academy of Hospice and Palliative Medicine, where he focuses on LGBTQ-inclusive care for patients and LGBTQ+ equity within the Palliative Medicine field. He currently serves as the immediate Past Chair of the organization's DEI Committee. Dr.

Tapper received his medical degree from Albany Medical College. He subsequently completed his residency in Internal Medicine at Mount Sinai Beth Israel, during which time he also served as Chief Resident. Dr. Tapper then completed a fellowship in Hospice and Palliative Medicine at UPMC in Pittsburgh, PA. During his time in Pittsburgh, Dr. Tapper also achieved an MS in Medical Education from the University of Pittsburgh. Dr. Tapper's interests lie in providing compassionate and holistic care for those with serious illness. He is also enthusiastic about graduate medical education with a focus on curriculum development and teaching communication skills.

MODERATOR: Amteshwar Singh, MD, MEd

Assistant Professor of Medicine, Division of Hospital Medicine at JHBMC

Director of Education, Division of Hospital Medicine at JHBMC

Associate Program Director, JHBMC Hospital Medicine Fellowship



Dr. Singh is an Assistant Professor of Medicine at the Johns Hopkins University School of Medicine. His clinical expertise is in internal medicine (Hospital Medicine). Dr. Singh serves as the Director of Medical Education for the Division of Hospital Medicine (CIMS), Department of Medicine at Johns Hopkins Bayview Medical Center. He also serves as the associate program director of the Internal Medicine Residency program as well as the hospital medicine fellowship program at Johns Hopkins Bayview Medical Center. He earned his medical degree from Government Medical College, Amritsar (India), and completed his residency at the Johns Hopkins University - Sinai Hospital Program. He then completed a Master of Education

(M.Ed.) degree from Johns Hopkins School of Education with his capstone work in psychometric analysis and Messick's validity framework application. His teaching interests include hypothesis-driven physical examination and Point-of-Care Ultrasound (POCUS). His research interests include competency-based assessment models for learners and pedagogy of diagnostic reasoning. His administrative work is focused on hospital medicine operations and examining early career hospitalist recruitment practices. He is an elected Fellow of the American College of Physicians (FACP) and Society of Hospital Medicine (FHM).

TEACHING COMPETITION: PARTICIPANTS & COACHES

PARTICIPANTS



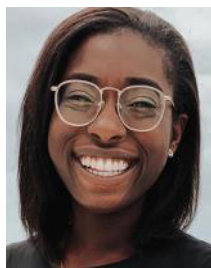
Dana Goplerud, MD
Senior Resident, PGY-4
Med-Peds Urban Health
Residency Program



Robbie Weinstein, MD
Intern, PGY-1
Osler Medical Residency



Christina Tamargo, MD
Fellow
Division of Nephrology

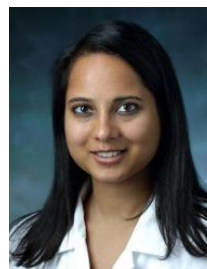


Christle Nwora, MD
Fellow
Pediatrics-Adolescent
Medicine

COACHES



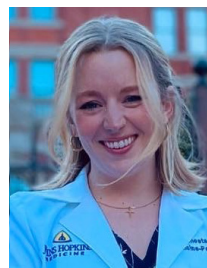
John Woller, MD
Assistant Professor of Medicine
Divisions of GIM & Hospital
Medicine at JHH
Associate Program Director
Osler Medical Residency



Ashwini Niranjana-Azadi, MD
Assistant Professor of Medicine
Wellness & Faculty Development
Director
Division of Hospital Medicine at JHH



Paul O'Rourke, MD
Associate Professor of Medicine
Assistant Dean for Medical Student
Affairs, JHU School of Medicine
Co-Director, Medical Education
Pathway



Lindsay Sheets, MD, MPH
Assistant Professor of Medicine &
Pediatrics
Division of General Internal Medicine

TEACHING COMPETITION: PARTICIPANTS & COACHES

PARTICIPANTS



Ashely Gordon-Phillips, MD, MPH
Senior Resident, PGY-3
Osler Medical Residency
Urban Health Primary
Care Track



Carolina Lopez-Silva, MD
Intern, PGY-I
Osler Medical Residency



Matthew Gross, MD
Fellow
Division of Nephrology



Vishal Patel, MD
Fellow
Division of Rheumatology

COACHES



Tina Zhang, MD
Assistant Professor of Medicine
Division of General Internal Medicine
Co-Director, Medical Education
Pathway
Director, Academic Women's Health
Fellowship in GIM



Niloo Latifi, MD
Assistant Professor of Medicine
Division of Hospital Medicine at JHH



Sonia Dalal, MD
Assistant Professor of Medicine
Co-Director, Hospitalist Education
Programs
Division of Hospital Medicine at JHH



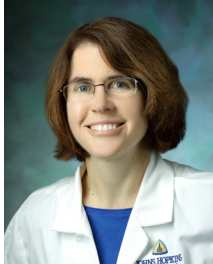
Michael Cammarata, MD
Assistant Professor of Medicine
Divisions of Hospital Medicine at
JHH & Rheumatology

CLINICAL CASE PROBLEM SOLVING

Gail Berkenblit, MD, PhD

Associate Professor of Medicine, Division of General Internal Medicine

Associate Program Director for Ambulatory Education, Osler Medical Residency



Dr. Gail Berkenblit is an assistant professor of medicine at the Johns Hopkins University School of Medicine. Her areas of clinical expertise include infectious disease and internal medicine. She received her undergraduate degree from MIT in 1990. She began her medical training in the Health Sciences and Technology joint program between Harvard and MIT. She completed her Ph.D. in the division of cell and developmental biology at Harvard, discovering the role of homeobox genes in uterine development and embryo implantation. She completed medical school and residency training in internal medicine at Johns Hopkins. Her research interests include the design and evaluation of an internet-based curriculum and improving resident training in HIV outpatient care.

Khalil Ghanem, MD, PhD

Professor of Medicine, Division of Infectious Diseases

Deputy Director of Education, Department of Medicine, Johns Hopkins Bayview Medical Center



Dr. Ghanem's research interests include sexually transmitted infections and the vaginal microbiome. In 2008, he received his PhD degree in Clinical Investigation from the Johns Hopkins Bloomberg School of Public Health.

John A. Woller III, MD

Assistant Professor, Division of Hospital Medicine at The Johns Hopkins Hospital

Associate Program Director for Clinical Reasoning, Osler Medical Residency



Dr. John Woller is a general internist at The Johns Hopkins Hospital, where he attends on inpatient teaching services, on the hospitalist service, and in the resident primary care clinic. He is passionate about bedside education and clinical reasoning. He is currently serving as the Clinical Director of Hospitalist Teaching Services and the Director of Clinical Reasoning for the Osler Medical Residency. Dr. Woller served as Assistant Chief of Service for the Longcope Firm of the Osler Medical Residency last year. He earned his medical degree from the Emory University School of Medicine in 2017 and completed an internal medicine residency at Johns Hopkins.